

## TECHNICAL INFORMATION

IP-55 12/07/2012

MODEL: ENDURO CG BIKE WITH BATTERY

### SUBJECT: INSTRUCTIONS FOR ASSEMBLY AND BATTERY CHARGE.

#### IMPORTANT

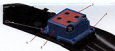
The battery supplied with the motorcycle is brand new (not charged).

#### **ASSEMBLY AND BATTERY CHARGE.**

This battery is maintenance free and checking the fluid level is not required.

To assembly the battery, follow these steps:

- 1. Assemble the battery in the bottom of the seat. The battery should be positioned as the image below. Place in the properly position the protective rubber (3) between the battery and the support (2). The assembly must be tightened at 10Nm (4) and in the corner (1) tighten also the security cable.



- 2. Screw the correct battery terminals, the red on the battery positive (+) and the black terminal on the negative (-)



#### **WARNING**

Hydrogen gas produced by the battery may explode if exposed to open flame or sparks. Keep the area ventilated and free from naked flames.

The operating instructions for the battery are as follows:

- 1- Check the battery tension in open circuit status (disconnected).
- 2- In case the battery's tension is below 12,6 V, the battery has to be recharged following the instructions in paragraph 3. If the battery voltage is above 12,6 V, the battery can be installed on the vehicle without having to recharge it..
- 3- 3.1. Constant voltage charge mode.
  - Constant voltage = 14,4 – 14,7 V
  - Initial charge current = 0,1 – 0,5 Cn
  - Charge duration = 6 hours minimum / 24 hours maximum.
- 3.2. Constant power charge mode.
  - Maximum charge current = 0,1 Cn
  - Recommended charging duration = 5 – 8 hours.
  - The product (charge current) x (charge duration) must be within the range: 0,5 – 0,8 Cn.

#### **Note**

In case that a different mode of charging is used to those established here, never exceed the maximum allowed currents nor the maximum charge duration of 24 hours.

#### **CAUTION**

Not using the standard manner of charging may seriously shorten the battery life. Never exceed the standard charge. Inverting the polarity of the battery terminals may cause battery charge problems and cause damage to the battery system.

The red terminal is positive (+) and the black terminal is negative (-).